



Manoharbai Shikshan Prasarak Mandal Armori's
**MAHATMA GANDHI ARTS, SCIENCE &
LATE NASARUDDINBHAI PANJWANI COMMERCE
COLLEGE ARMORI**

Dist. Gadchiroli (Maharashtra) 441 208

Affiliated to Gondwana University, Gadchiroli.

Re-accredited by NAAC 'A' with 3.02 CGPA

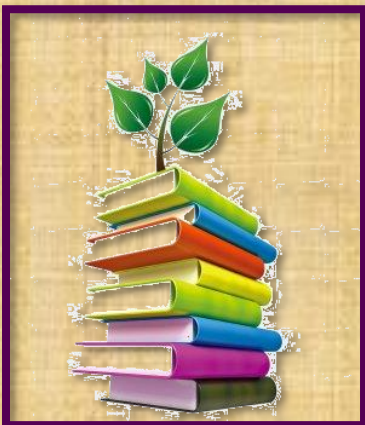
SELF STUDY REPORT

SSR : 2016-2017 to 2020-2021

CRITERION – I **CURRICULAR ASPECTS**

METRIC NO: ~ 1.1.2.

**METRIC NAME: ~ THE INSTITUTION ADHERES TO THE ACADEMIC
CALENDAR INCLUDING FOR THE CONDUCT OF
CIE.**



**Web: - mgcollegearmori.ac.in
e-mail: - mgcollege.armori@gmail.com
Phone: - 07137-266558**

Institution's Academic Calendar

1. Academic Calendar 2021-2022:

<http://mgcollegearmori.ac.in/files/Academic%20Calendar%202021-2022.pdf>

2. Academic Calendar 2020-2021:

<http://mgcollegearmori.ac.in/files/Academic%20Calendar%202020-2021.pdf>

3. Academic Calendar 2019-2020:

<http://mgcollegearmori.ac.in/files/Academic%20Calendar%202019-2020.pdf>

4. Academic Calendar 2018-2019:

<http://mgcollegearmori.ac.in/files/Academic%20Calendar%202018-2019.pdf>

5. Academic Calendar 2017-2018:

<http://mgcollegearmori.ac.in/files/Academic%20Calendar%202017-2018.pdf>

6. Academic Calendar 2016-2017:

<http://mgcollegearmori.ac.in/files/Academic%20Calendar%202016-2017.pdf>